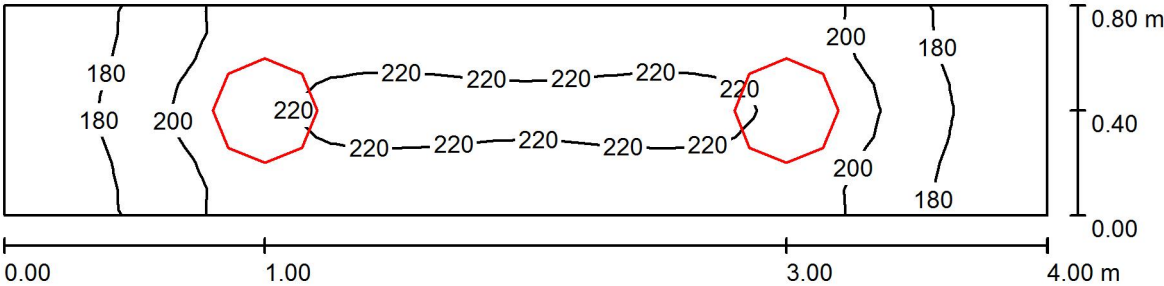




Operator
Telephone
Fax
e-Mail

WC 2.10 / Summary



Height of Room: 2.800 m, Mounting Height: 2.800 m, Maintenance factor: 0.67

Values in Lux, Scale 1:29

| Surface | ρ [%] | E_{av} [lx] | E_{min} [lx] | E_{max} [lx] | $u0$ |
|-----------|------------|---------------|----------------|----------------|-------|
| Workplane | / | 202 | 161 | 224 | 0.794 |
| Floor | 30 | 134 | 111 | 150 | 0.828 |
| Ceiling | 70 | 227 | 123 | 1309 | 0.542 |
| Walls (4) | 60 | 191 | 52 | 979 | / |

Workplane:

Height: 0.750 m
Grid: 32 x 8 Points
Boundary Zone: 0.000 m

Illuminance Quotient (according to LG7): Walls / Working Plane: 1.151, Ceiling / Working Plane: 1.121.
Proportion of points with less than 400 lx (for IEQ-7): 100.00%.

Luminaire Parts List

| No. | Pieces | Designation (Correction Factor) | Φ (Luminaire) [lm] | Φ (Lamps) [lm] | P [W] |
|--------|--------|---|-------------------------|---------------------|-------|
| 1 | 2 | LEDVANCE GmbH 4058075080072 SURFACE-C LED 400 24W/4000K IP44 (1.000) | 1920 | 1920 | 18.0 |
| Total: | | | 3840 | 3840 | 36.0 |

Specific connected load: $11.25 \text{ W/m}^2 = 5.56 \text{ W/m}^2/100 \text{ lx}$ (Ground area: 3.20 m^2)